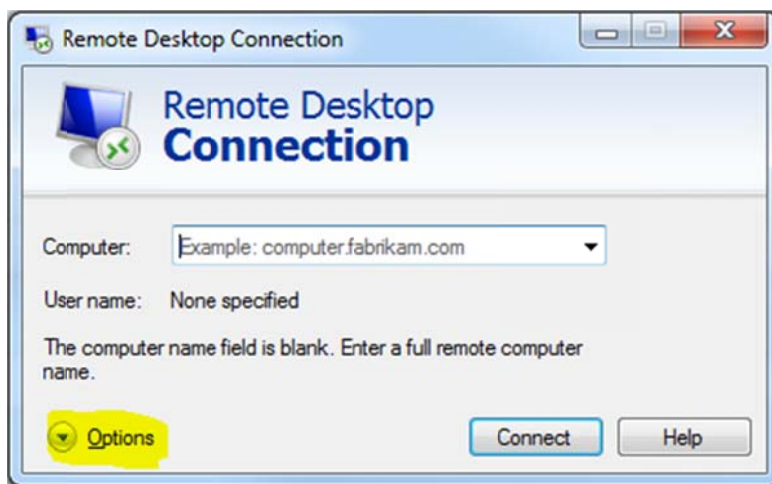


How to setup Remote Desktop (RDP)

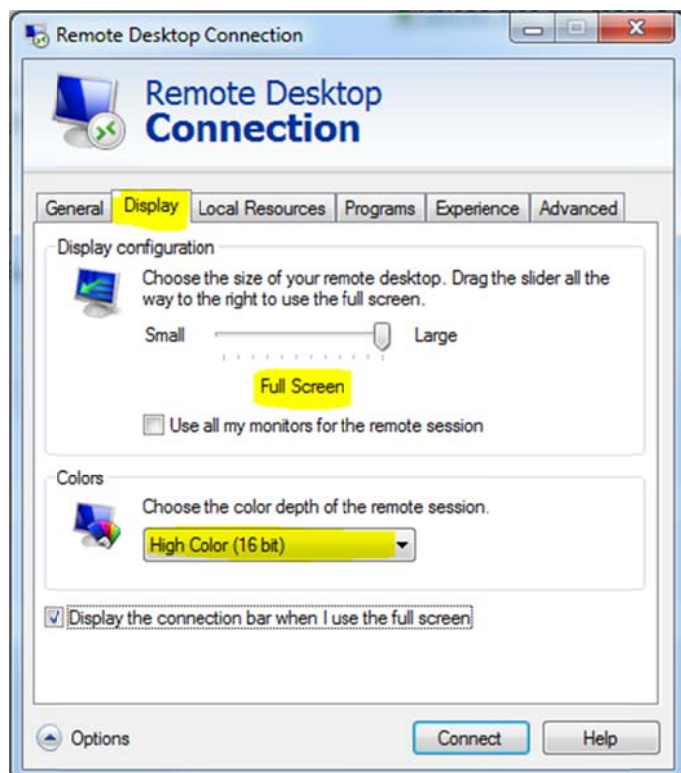
Before following this document please contact your network Administrator and ensure your server\workstation supports Remote connections and that you have permission to connect remotely. As well as the address of the machine (e.g. 111.212.0.15 or example.dyndns.org)

Windows 7 (also works for Windows XP with latest updates.)

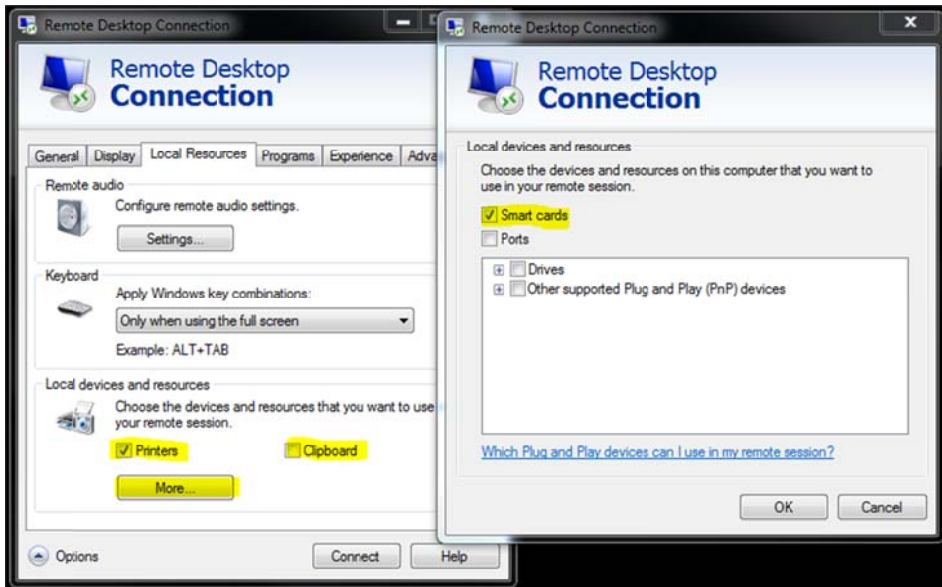
- Click Start (windows icon in the bottom left corner)
Select All Programs, Accessories, Remote Desktop Connection.
- Once opened please click on options shown below, this will allow you to select more options.



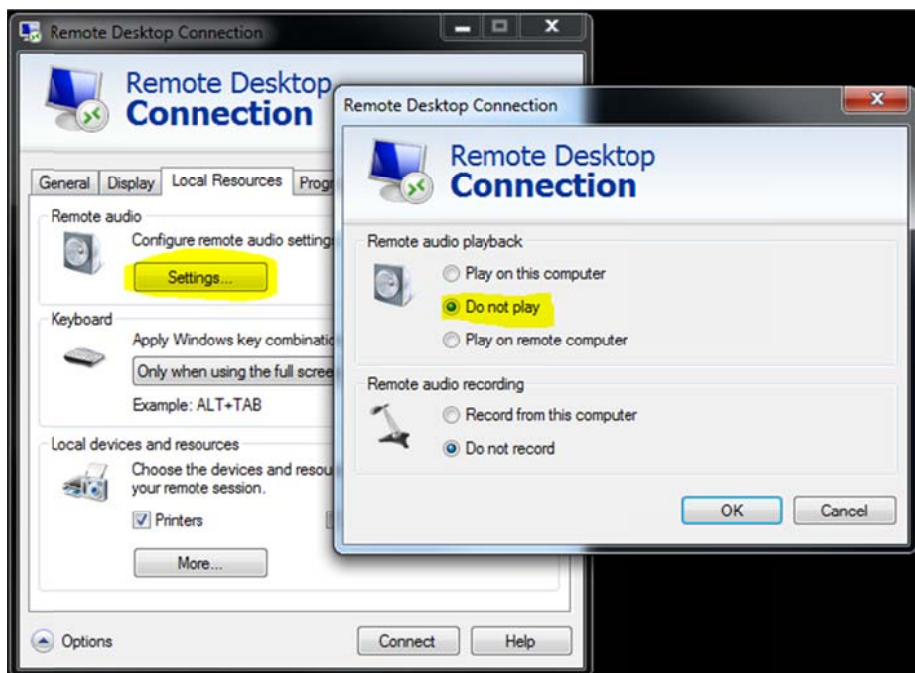
- We recommend that you use the following settings for best performance.
Select the Display Tab. Set Display configuration to Full Screen and change Colors to High Color (16 bit).



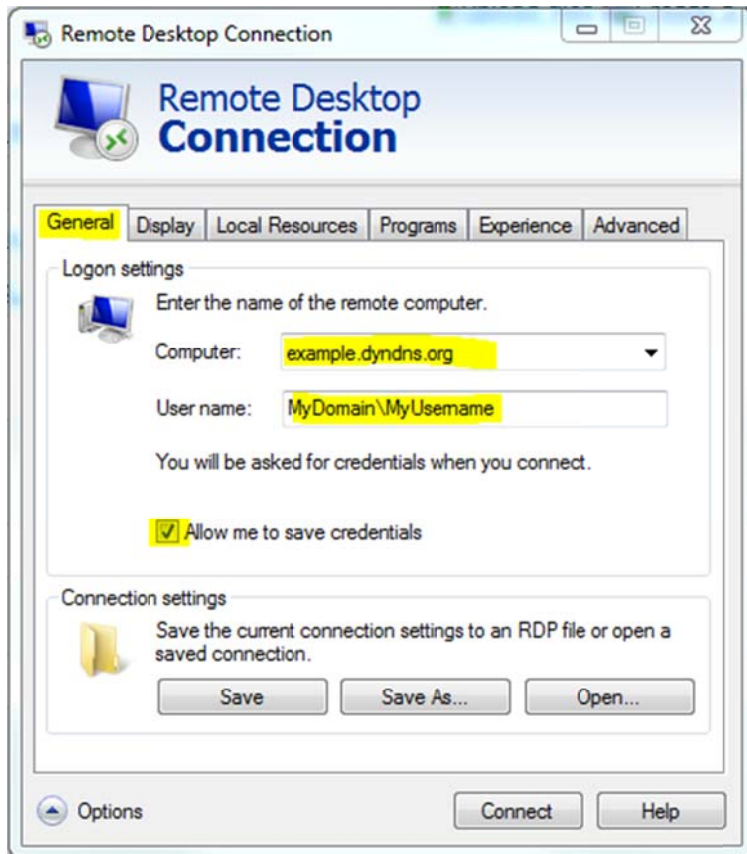
- Select the Local Resources Tab. Please check Printers and uncheck clipboard. Click More... and uncheck everything but Smart cards.



- Click Settings under Remote audio. And change Remote audio playback to "Do not play". Click OK.



- Return to the General Tab. Please enter the address of the Computer or Server you wish to connect to. You may need to enter you domain name before your user name (e.g. MyDomain\MyUsername). Tick the box to save the computer and username.



- Finally click the Save As... button. We suggest that you save this to the desktop as this will make it easier for you to have quick access to the server/computer you wish to connect to. Give this link a meaningful name (e.g. work.rdp)
- Now there should be a link on your desktop with all the setting we just made. Close Remote Desktop Connection and let's test it.

If you have any issues please feel free to contact us at support@universal-it.com.au to organise a support ticket. Otherwise contact your network administrator.